

CP2000-ZX Main Software Upgrade Instruction Sheet

INTRODUCTION

The following instructions explain how to upgrade CP2000-ZX Main Software. This software upgrade is intended for authorized Christie installers and must be performed from the web user interface, not the CDP. Make sure you are connected to the projector through the **Management Ethernet** port. Allow approximately 30 minutes to complete.

⚠ CAUTION

Never downgrade projector software. This could result in limited projector functionality. Contact Christie Tech Support for more information.

⚠ CAUTION

Never power off the projector during an upgrade.

INSTRUCTIONS

NOTE: Must be logged into the web user interface at the Service level.

1. BOOT INTO FAILSAFE MODE.

- a. From the web user interface access the **Admin: General** menu.
- b. Click on **Reboot into Failsafe**. (It takes approximately 1 minute for the projector to enter failsafe mode.) At this time, the interface will refresh and a Failsafe web screen will appear (Figure 2).
NOTE: The CDP will also display “Failsafe”.

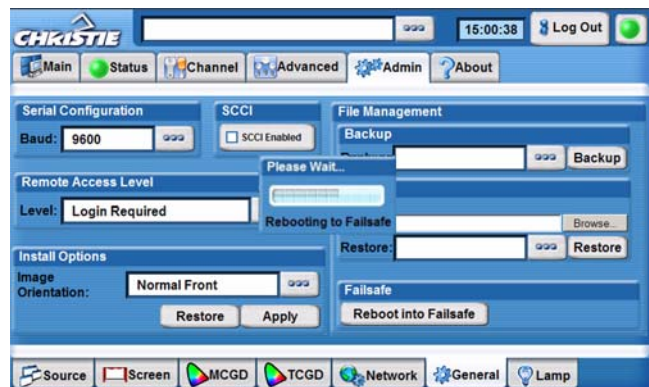


Figure 1 . Reboot into Failsafe

2. *TRANSFER THE SOFTWARE UPGRADE PACKAGE TO THE PROJECTOR VIA FTP.*
 - a. Open a separate web browser window and go to the address: **ftp://xxx.xxx.xxx/** (where “xxx.xxx.xxx” represents the IP address of the projector being upgraded). A blank ftp window will appear.
 - b. From your desktop, open the folder containing the software upgrade package. The upgrade package ends with the extension **.shar**.
 - c. Drag the upgrade package from your desktop and drop it into the blank ftp window from above. Allow the file to copy over.
3. *INSTALL THE SOFTWARE UPGRADE PACKAGE TO THE PROJECTOR.*
 - a. From the Failsafe web screen, click **Reload** to display the .shar upgrade package that was transferred to the projector in the above step. The .shar file will appear in the “Upgrade Packages” window, as shown in Figure 2.
 - b. Select the .shar file and press **Upgrade** to begin the upgrade. Allow approximately 15 minutes for the upgrade. A status window will appear to show percentage complete. Click **Close** to continue.
4. *REBOOT THE PROJECTOR INTO APPLICATION MODE.*
 - a. Once the upgrade is complete, press **Reboot** from the Failsafe web screen. This reboots the projector back into application mode and the login screen will appear. Allow approximately 2 minutes to complete.

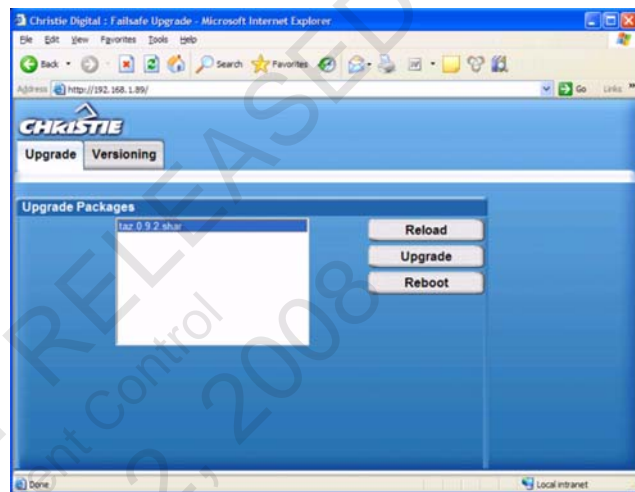


Figure 2 . Failsafe web screen